



Orion™

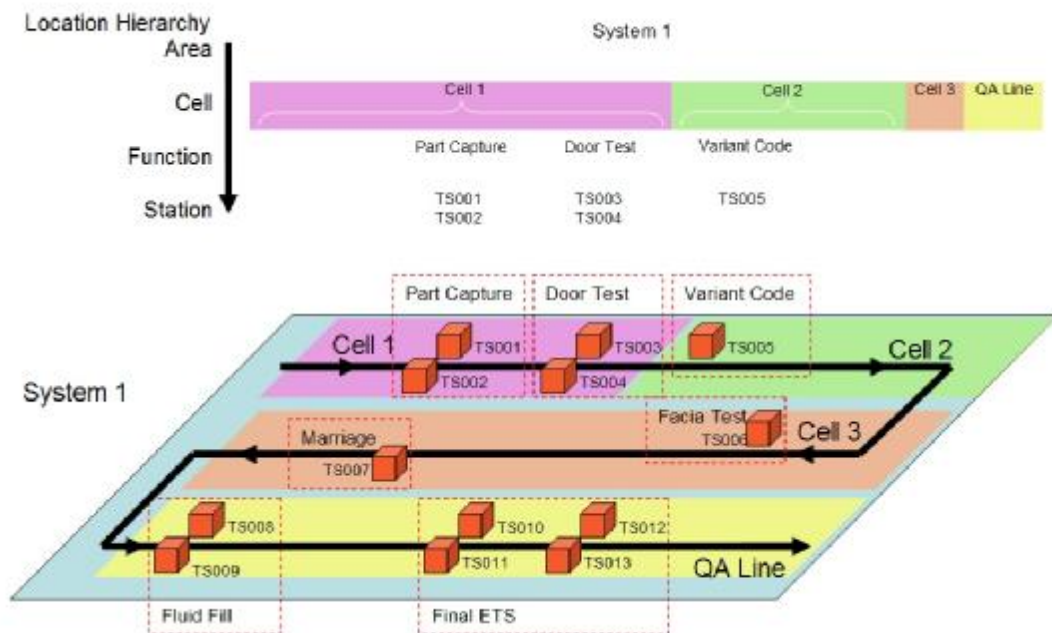
In today's increasingly competitive, quality-driven manufacturing world, information is playing a continuously growing part in allowing manufacturers to deliver a quality assured product.

Orion™ - QTS (Quality Traceability System) is an automotive industry biased storage and reporting system that captures data from a variety of sources in a manufacturing environment. This data is identified against a unique ID (usually VIN) along with time and location and stored within the database.

The system collects traceable shop floor data from a wide range of sources (including items such as station, shift, time, build no., component serial numbers, measured values and visual inspection data).

Once in the **Orion™** database, data can be queried (via a web browser interface from anywhere within your organisation) in a number of ways to provide quality assurance and performance statistics geared to manufacturing requirements.

The storage used is highly flexible, effectively learning the shop floor client data structures as they are passed in. **Orion™** may, therefore, be used with a range of input sources; provided by Sorion or as a reporting front end to third party systems.



CRITICAL FASTENINGS

Torque & Angle, Tool ID, Re-work management

TRACEABILITY

Part ID, Batch / Serial number, Date & Time, Location

ELECTRICAL TEST

V,I,&R, Part ID, Control Module Data & DTC's

YOUR PROCESS

Configured to match your quality assurance needs

MECHANICAL ASSEMBLY

Images, Weld results, Filling data, Pressure, Measurements



Electronic & Software Test Solutions

Orion - Results Database

All of the data collected by **Orion™** is stored in a MS SQL database held on a central server.

To ensure the robustness of the system, a separate process handles communications with the shop floor stations via HTMP and XML transport providing transaction logging and good firewall performance.

The database schema is based on many years experience in the manufacturing arena and is optimised for efficient storage with rapid indexing and presentation of data.

The database supports, Check, Boolean, Valued, Scalar, String, Array and Binary (e.g. images).

Orion - Reporting

The results analysis and reporting functions of **Orion™** allow location and assembly based views of the stored data. The system shows latest and all results for a specific assembly, the most common failures by station / zone and provides parameter access to examine the historic trend of value data (e.g. DC tooling fastening torque).

All reports are presented within web pages and make extensive use of user friendly context sensitive menus. Fully hyper-linking from specific results provides an easy drill-down process to allow rapid access to the reports.

A wide variety of standard reports allow evaluation of the process on a machine / track area basis. These reports allow recovery of a complete history of the finished assembly or real-time monitoring of current failures. Custom reports may be created (or output to Excel) to deliver specific data analysis requirements.

Key benefits?

Traceability - the primary aim is to provide traceability of all processes on product assemblies. This data is used to guide the rectification processes, to allow buyoff of assemblies and to provide short-term traceability history and manufacturing performance statistics.

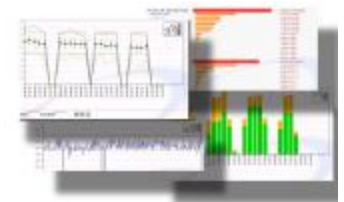
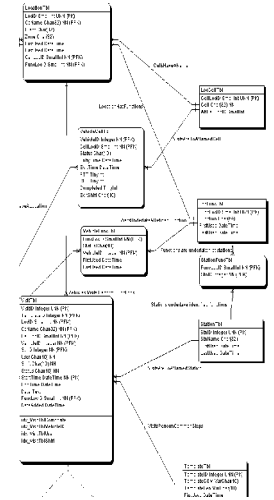
Analysis - standard reports provide an insight into the performance of your manufacturing process. Whether it is Throughput, Right-First-Time or trends on a specific parameter, the data is always available and up to date.

Access - user access to monitoring and reporting systems is via secure web interfaces, enabling users from all parts of the company to access the system.

Integration - providing a central repository for the storage of all critical data, and allowing this to be used by other company systems to improve quality and assist in seamless manufacturing.

Data management - providing services for distribution and storage of data associated with the system

Support - allowing a centralised view of the whole system's current and past performance.



Sorion Group
Magreal Industrial Estate,
Freeth Street,
Birmingham, B16 0QZ
Tel: +44 (0)121 454 8966
Fax: +44 (0)121 454 8970
sales@sorion.co.uk
www.sorion-group.com