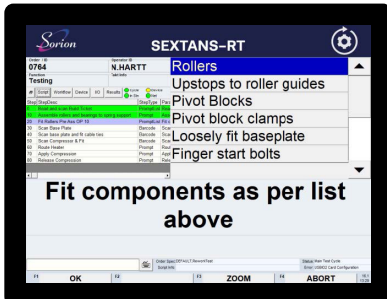




SEXTANS-RT

Process control and testing application



FEATURES

- Central management and support
- Visual operator guidance
- DC tooling & Pick-to-light
- Language support
- Script extensions - Highly adaptable

BENEFITS

- Error proofing
- Full traceability of all parts
- Integration with factory equipment

APPLICATIONS

- Manufacturing guided process
- Electrical & QA testing
- Rework, stillage management & buyoff
- Centralised workflow definition & system deployment

Sextans-RT is Sorion's shop floor process control and testing application

Designed for use in the production environment, Sextans-RT helps improve the efficiency of assembly, testing and data capture applications through a system of visual and intuitive work.

Sextans ensures full traceability for quality assurance of all parts.



Sextans takes input information (via RFID, Barcode, etc.) to initialise the exact build or test sequence. This can be either a simple step type (e.g. screen prompt, DC Tool fastening, etc.) or a script based complex process (e.g. ECU diagnostics, machine control, etc.).

Data for each completed step (such as shift, time, build no, component serial numbers, measured values and visual inspection data) is recorded in the Orion™ database. This data is identified against a unique ID, allowing the user to retrieve each unit's complete history with a scan of a barcode.

FUNCTIONS OF SEXTANS-RT



KEY BENEFITS

PROCESS - with assemblies being manufactured to a very high level of variability, it is vitally important to ensure that the assembly is manufactured to match this specification.

TEST - Sextans performs the test schedules required to carry out end-of-line functional inspections on built up assemblies.

TRACEABILITY – All results generated by Sextans are forwarded to an Orion™ database to provide traceability of all processes and tests on finished assemblies.

A wide variety of standard reports allows evaluation of the process on a machine / track area basis. These reports allow recovery of a complete history of the finished assembly or real-time monitoring of current failures.

REWORK – Data from previous stations is available at all rework stations (either in-line or off-line) to quickly allow rectification and assembly retesting

INTEGRATION – to factory assembly tracks, assembly equipment and facilities. Feeds are available from production control systems and assembly ON / NOK status sent to buy-off systems

MANAGEMENT – provides the editors and tools for distribution and storage of test sequences required across the system. Process steps and tests can easily be moved between stations.

SUPPORT – Inbuilt tools to monitor and control all I/O points and log or graph data. Also a centralised view of the whole system's status is always available.

MANAGEMENT

Test script, process development and release

Sextans systems are managed centrally. **Workspace Manager** is used to configure all on-line process control stations, including:

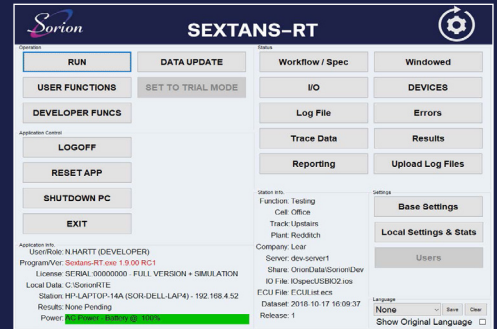
- Definition and configuration of the physical test stations and user access rights
- Global barcode definition / MES Interfaces
- Creation of workflows, data tables and scripts

Using the Workspace Manager, data is released to the production environment, a backup of the current data is made prior to publishing.

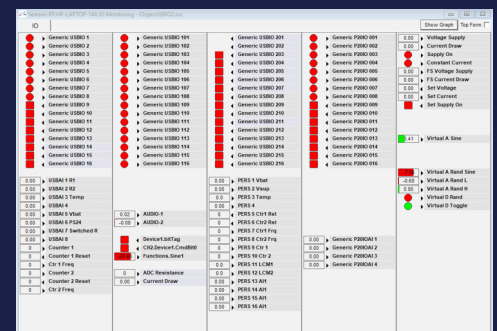
Debugging software

The embedded scriping engine adds extra functionality and flexibility to process steps, allowing a script developer to debug and develop the current script.

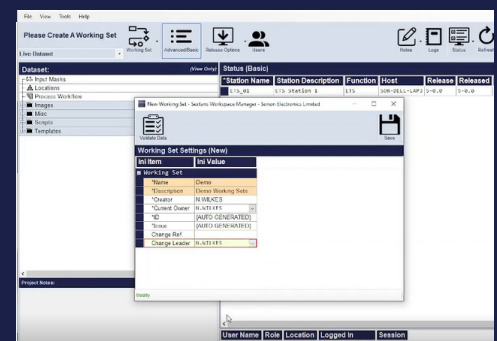
THE SORION SOLUTION



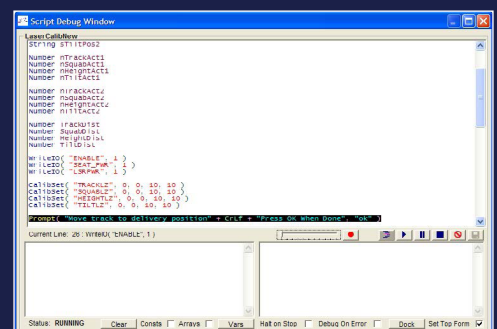
Sextans startup screen



I/O Status & Logging



Sequence editing



Script debug



Sorion Electronics Ltd
Magreal Industrial Estate
Freeth Street, Ladywood
Birmingham, B16 0QZ

Tel: 0121 454 8966
Email: sales@sorion.co.uk
www.sorion.co.uk

