



## FEATURES

Overview reporting and in-depth analysis accessible via web

Flags up urgent problems for immediate action

Captures vital data for analysis including uptime, downtime, rejects and scheduled stoppages

## BENEFITS



Greater visibility of production line performance



Improves resource utilisation



Highlights the principle causes of inefficiency

## APPLICATIONS

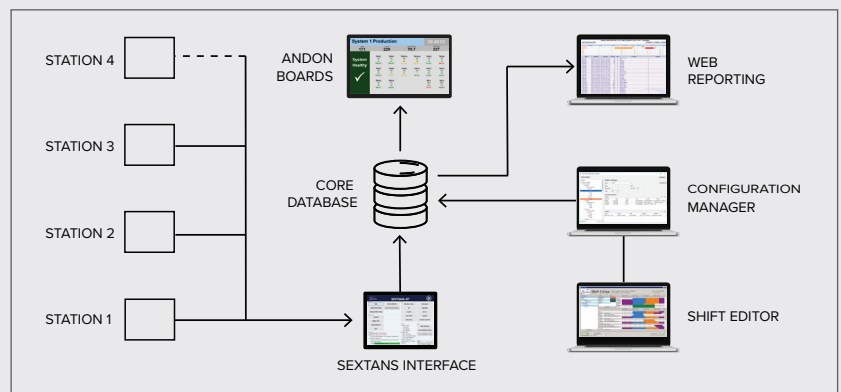
Equipment monitoring

OEE (Overall Equipment Effectiveness) reporting

Real-time visualisation of machine status and production efficiency

Orion EMA provides centralised monitoring, availability and event tracking that allows Andon display and web based reporting of production line performance, including:

- Current Status
- Equipment Availability & OEE (Overall Equipment Effectiveness)
- Downtime Cause Analysis



Orion EMA system components

Visibility of **real-time performance metrics** and **drill-down analytics** empowers manufacturers with actionable information to reduce equipment downtime and increase operating efficiency and profitability.

Running with a Sextans installation Orion EMA allows for the centralised capture of station performance and deployment of cycle time or shift targets.

## SYSTEM COMPONENTS

### CORE DATABASE

The back-end database provides data storage, configuration and import processing. It collects data from each station and machine operator for the entire production floor.

### WEB REPORTING

The collected data is integrated into a comprehensive analytics and reporting tool with a similar look and feel to Sorion's Orion Quality and Traceability database that customers are already familiar with.

Reports include:

- Station status overview
- Events report
- Availability

## ANDON DISPLAY

Andon boards allow **real-time visualisation** of production status and events. Simple colour-coding highlights possible issues and provides an at-a-glance indication of station performance against Parts Goal or OEE metrics.

## DATA MANAGEMENT TOOL

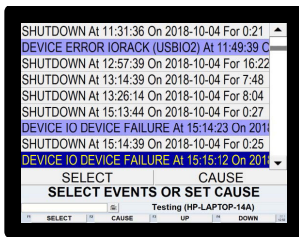
Orion EMA systems are **managed centrally**. The data management tool is used for initial setup and ongoing Takt/OEE value adjustment on a station by station basis.

It allows configuring the following:

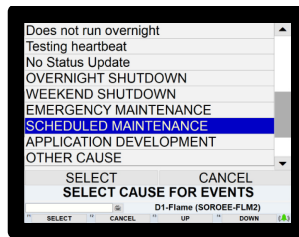
- Database connection
- Line Rate / Shift Targets / Cycle Time
- Location Data & Rate Adjustments
- Shifts
- Failures & Causes
- Scheduled Jobs & Global Config Data

## SEXTANS INTERFACE

The data interface from Sextans to the database enables the seamless transfer of Takt and Andon data to Orion-EMA. It also allows for operators to add human context to machine data (assign cause data to failures and enter additional information).



Initial event selection list (multiple select)



Cause assignment

## ABOUT SORION

With over 32 years of industry experience, Sorion designs and manufactures bespoke guided assembly, collaborative robotics and end of line test systems to a range of industry sectors: automotive, aerospace, warehousing and manufacturing.

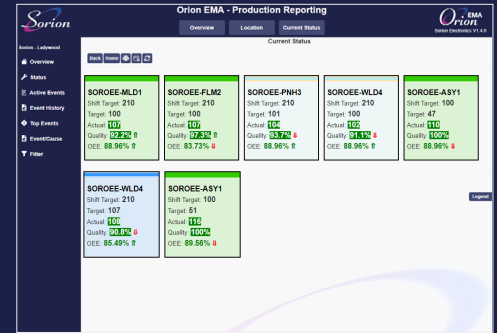
### Your Partner for:

- Guided Assembly Process Control
- End of Line Test Systems
- Autonomous Mobile Robot Systems
- Ruggedised Electrical Connectors & Harnesses
- Quality and Traceability Reporting
- Electronic Product Design and Development

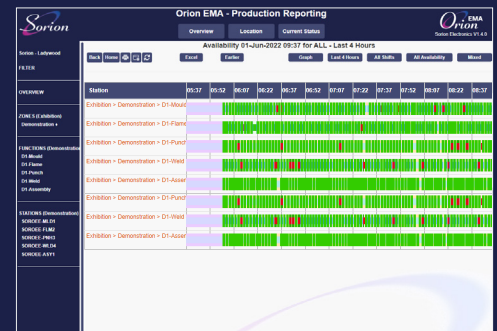


**Sorion Electronics Ltd**  
Magreal Industrial Estate  
Freeth Street, Ladywood  
Birmingham, B16 0QZ

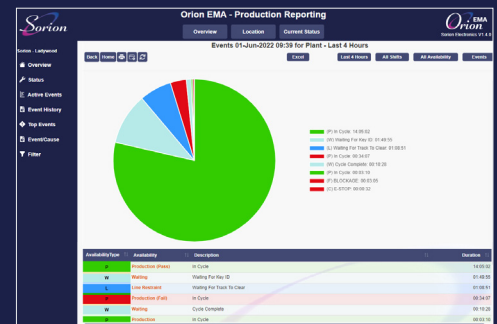
## THE SORION SOLUTION



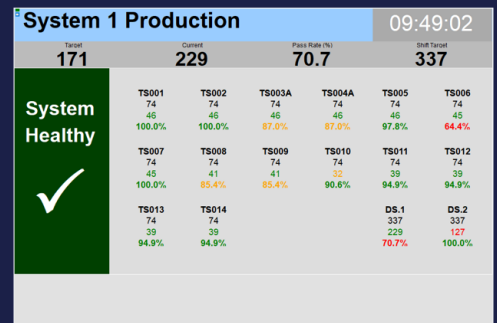
Station status overview



Equipment availability reporting



Events / Cause report



Andon screen - colour coded to highlight possible issues

Tel: 0121 454 8966  
Email: sales@sorion.co.uk  
www.sorion.co.uk

